

MONT  ROCHELLE

Little Corker's

NEW YEAR'S EVE MENU

R 875

CANAPÉS

Goats cheese and strawberry tarlet (V) (G) (M)

Mini hot dogs (G) (So)

Beef meatball lollipop (Sp) (Ga)

STARTER

Fish goujons with tartare sauce (G) (F) (Sp)

MAIN

Beef fillet (M) (G)

Sweet potato mash with creamed spinach

SWEET TREATS

Trio of of ice lollies (M) (E)

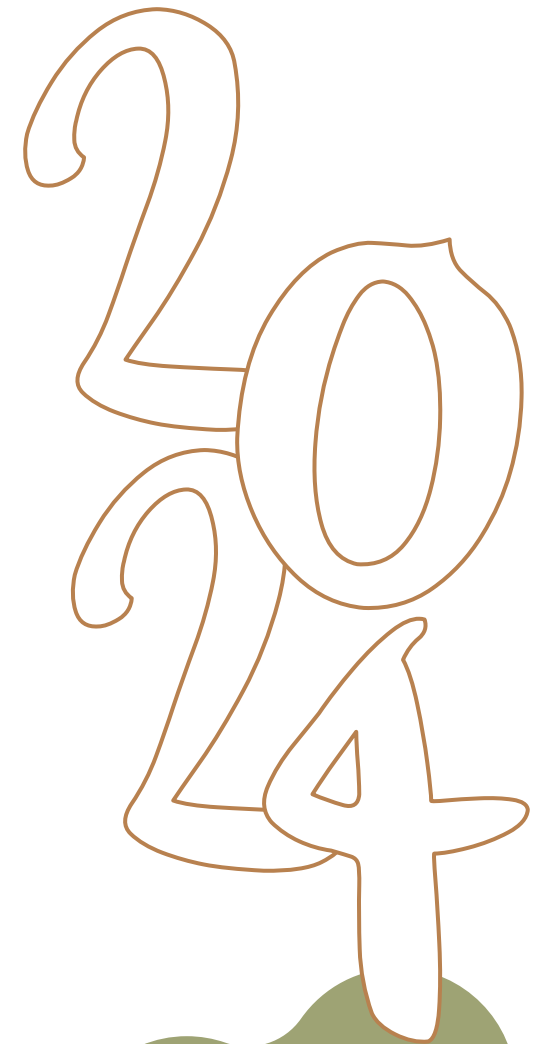
Strawberry

Chocolate

Vanilla

If you have any specific dietary requirements or food allergies, please let your waiter know before placing your order. Our chef will be more than happy to adapt any of our dishes where possible.

(C) Celery (Cr) Crustacean (E) Eggs (F) Fish (L) Lupin (G) Gluten (M) Milk (Mo) Molluscs (Mu) Mustard (N) Nuts (P) Peanuts (Ss) Sesame (S) Soya (Sp) Sulphur Dioxide (V) Vegetarian (Vg) Vegan



Colour the
new year in!